

Bioalloy and the Body Performance:

Planes of (non) Existence

S. Chandrasekaran & Gary Cass

This project is an alliance between a performance artist S. Chandrasekaran and scientist Gary Cass. The project will engage with the Planes of (non) Existence¹ between a Human Body and a Cyborgian System - the passage between the living and the quasi-living. Also to comment on the real and the unreal dimensions, that moves beyond space, time and consciousness. The Planes of (non) Existence is not just an obstacle between worlds but theoretically permeates between the known physical (material reality) and ethereal (undefined) worlds.

Introduction to Bioalloy and the Body Performance: Planes of (non) Existence

The Planes of (non) Existence refers to both the Plane of Existence (physical reality) and the Plane of Non Existence (ethereal dimensions). It is within both planes that the 'go-between continuum' is sited. It is within this site, that the 'go-between continuum' allows 'the others' (audience) to engage during the performance at differing point of perception² and individual sensory cognition³.

In regards to the Planes of (non) Existence, the 'go-between continuum' does not only give presence to both dimensions, physical reality and ethereal dimensions, but it also shapes the co-presence of 'the others'. The co-presence of 'the others' gives the point of perception a 'real reality' by means of the sensory cognition of the performance. It is the sensory cognition at any point of perception that is governed by the viewer's exclusivity (Fig. 1 - 5).

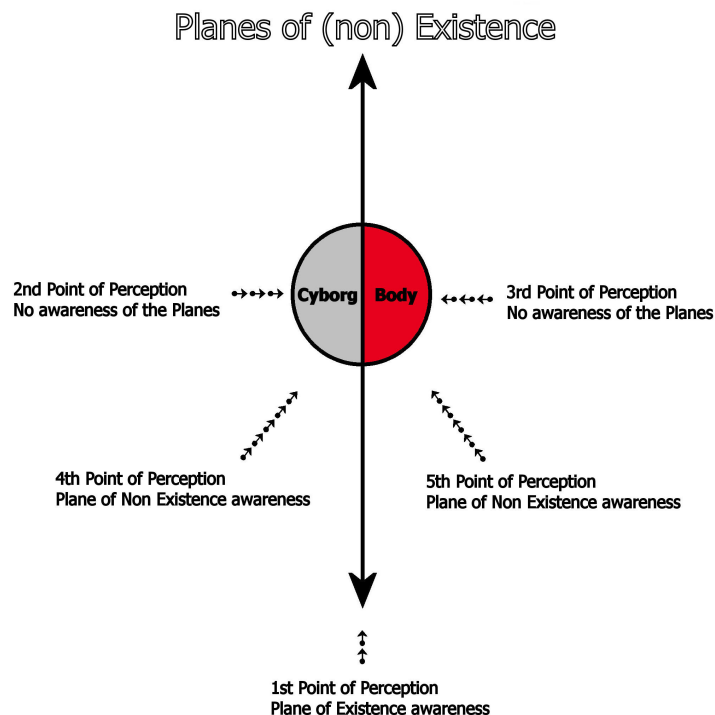


Figure 1: A schematic diagram (bird's eye view) describing the points of perception to the Planes of (non) Existence during the Bioalloy and the Body Performance. Here, the point of perception is within the given space, time and consciousness during the performance; in which can be defined as 'lived place'.

¹ The Planes of (non) Existence refers to both the Plane of Existence and the Plane of Non Existence as one go-between continuum.

² The point of perception is within the given space, time and consciousness during the performance; in which can be defined as 'lived place'.

³ Sensory cognition in this instance is described only as a physical awareness due to all the five senses; sight, hearing, touch, taste & smell.



Figure 2: The 1st (front-on) point of perception that only allows the viewer to engage with the Plane of Existence. The viewer perceives the real Body and the real Cyborg.



Figure 3: The 2nd (side-on) point of perception where the viewer will have no awareness of the Planes of (non) Existence. The viewer only perceives the Cyborg.



Figure 4: The 4th (angle-on) point of perception where the viewer engages the Plane of Non Existence, allowing the viewer to perceive the real and unreal Cyborg. This point of perception will be placed somewhere between the 1st and 2nd points of perception (Fig. 1). Here there is no perception of the Plane of Existence.



Figure 5: The 5th (angle-on) point of perception where the viewer engages the Plane of Non Existence, allowing the viewer to perceive the real and unreal Body. This point of perception will be placed somewhere between the 1st and 2nd points of perception (Fig. 1). Here the viewer also perceives of the Plane of Existence, as the real Cyborg is also perceived.

The Bioalloy and the Body performance will attempt to comment, not only the living form as defined by the real Body, but also the quasi-living as defined by the Cyborgian System. The quasi-living process includes a bacterial interaction with the metallic skeletal system of the Cyborg. During the performance the Cyborgian System will develop the following bodily functions; such as skeletal systems, ossification, bleeding and bruising, and skin formation (Fig. 6).

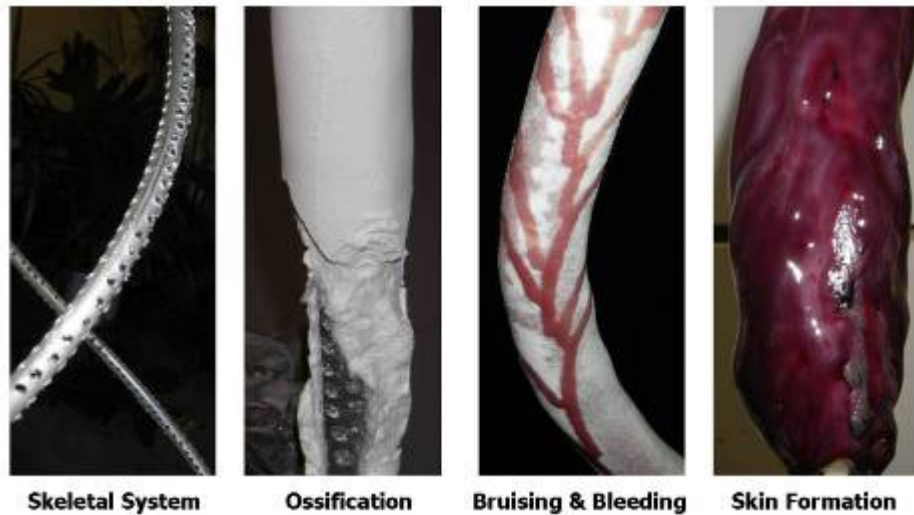


Figure 6: The Cyborgian System's bodily functions that take form during the Bioalloy and the Body Performance: Planes of (non) Existence.

The Cyborgian System's bodily functions will be enhanced with the introduction of five other senses, such as sight, hearing, touch, taste & smell. Due to the complexity of amalgamating all five senses with the Cyborg's bodily functions, the Bioalloy and the Body alliance will invite other artists to take up the role of investigating the senses as appropriate to their discipline; and have them critically engage during the performance. As the five senses are very exclusive to the individual, the performance will draw on critique at all points of perception as the foundation with which to further appraise.

The combination of the Planes of (non) Existence into a 'go-between continuum' is a site where we create duality between two dimensions (Body and Cyborg). It's within this site where we attempt to question the two dimensions and the possibilities of permeation that exists through additional channels (unreal and real).

Acknowledgements:

The Bioalloy and the Body Performance: A Cyborgian Plane of Existence was first commissioned by the P-10 gallery, Singapore, July 2006.